



**STATO MAGGIORE DELL'ESERCITO  
REPARTO IMPIEGO DELLE FORZE**

---

**STANAG N. 2003**

( All. Aa003 )



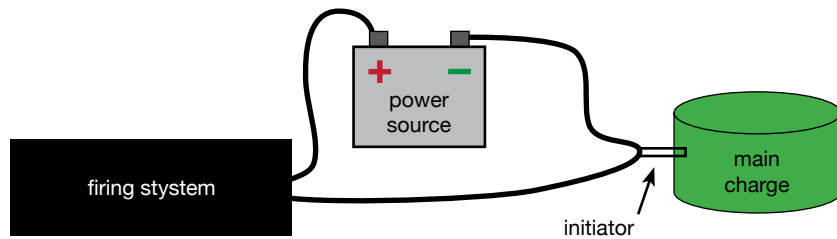
**OGGETTO: IED MANUAL ( U.S. FORCE )**

Promulgato il 17 ottobre 2003



**C**OUNTER  
**I**mprovised  
**E**xplosive  
**D**evice

<b>1. IED simplified definition</b>	<b>4</b>
Firing system	4
Power source	4
Initiator	5
Main charge	5
<b>2. Types of IED's</b>	<b>6</b>
Vehicle born	6
Radio + Timer	6
Command + Victim operated	7
Suicide	7
<b>3. Potential IED indicators</b>	<b>8</b>
<b>4. Possible IED placements</b>	<b>14</b>
<b>5. Vulnerable points</b>	<b>16</b>
<b>6. Counter IED measures</b>	<b>18</b>
<b>7. Actions on IED attack</b>	<b>23</b>
<b>8. Exploitation</b>	<b>24</b>
<b>9. Methane report</b>	<b>25</b>



An IED is triggered by the firing system e.g. a pressure plate, mobile phone, radio, command wire, timer. A signal is sent to the initiator which activates the main charge (e.g. artillery, grenades, mines, home-made explosives, or combinations of several explosives and/or fuel) the whole system is powered by a power source (e.g. car batteries).

**Firing System**

The firing system triggers the IED.



**Power Source**

The power source supplies the IED system with electrical power.



**Initiator**

The initiator causes the main charge to explode. A main charge needs to be activated, it cannot explode by itself.



**Main Charge**

The main charge provides the explosion to destroy the target, for more effect e.g. fuel cans, nails, shrapnel could be attached.



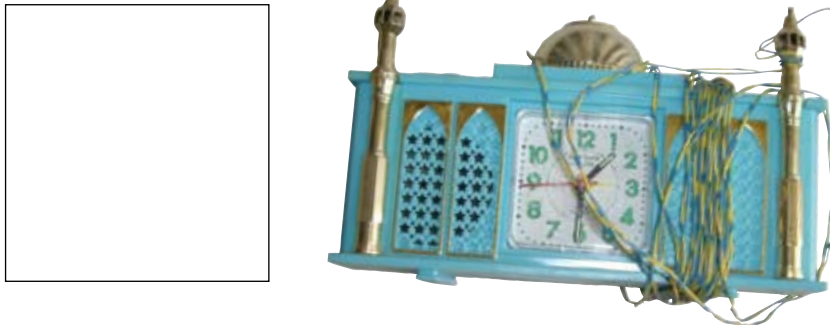
**Vehicle born**

IEDs hidden in a car or truck is called a VBIED, with a suicide bomber in it, its called a SVBIED.



**Radio + Timer**

Radio-controlled IEDs are triggered when the operator sends a signal to the radio on the IED. Timers are set at a specific time to trigger the IED.



**Command + Victim operated**

Command or cmd wired IEDs are triggered by a wire from the operator to the IED. Victim operated IEDs are triggered by the target itself through driving on a e.g. pressure plate.



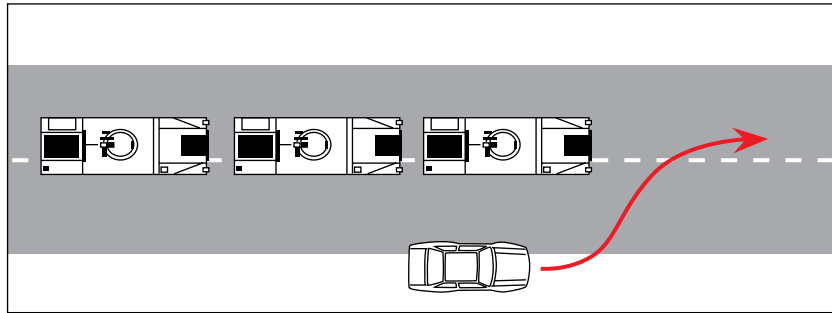
**Suicide**

Suicide bombers carry a vest rigged with explosives, the IED is triggered by themselves and/or by another operator from a distance. Suicide bombers could also use vehicles rigged with explosives in their attack.



**Vehicle behaviour**

Vehicles acting strange, following or ahead of your convoy for a long distance and then pulling off the side of the road. Cars parked on the side of the road with flashing lights are indications that something is wrong.



**Obstacles in road**

Man made obstacles on the road may be placed there to slow you down or channel your convoy before the IED attack.



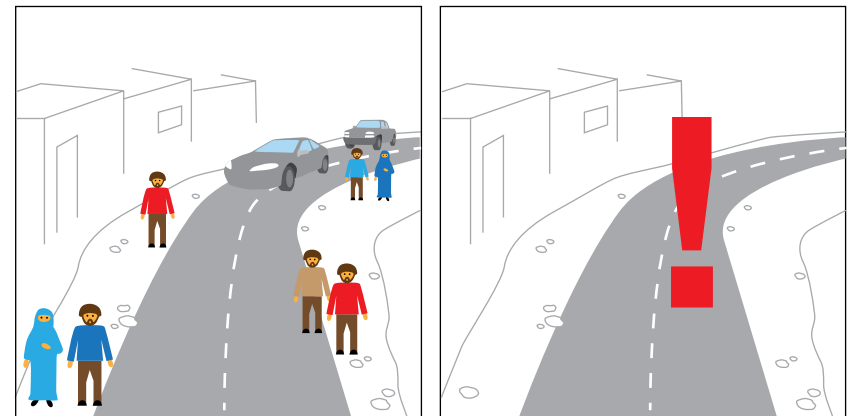
**Freshly dug holes, new dirt, piles of rock/gravel**

A fresh hole in the ground, new dirt, piles of rock are indications that some one recently buried something in the ground that might be an IED.



**Changes in pattern of life**

A sudden absence of playing children, normal traffic and other daily activity may be an indicator that something is going to happen.



**Visible or hidden wires**

Look out for (colored) wires, visible or dug in. Wires are an important indicator of IED presence / evidence.



**Markers**

Markers are used to trigger the IED at the right time, look for objects that might be used as a marker.



When a vehicles passes the marker. The operator can trigger the IED at the right time.



**Shapes**

Pay attention to object outlines that seem out of place for the environment.



**UXO'S**

If you find these and you didn't drop it or place it then don't pick it up. It may kill or injure.

Mark the location and report the finding!





**Roads**

Roads, by the shoulder, buried under the surface of the road, in tire tracks of likely ISAF/ANSF vehicles or in culverts underneath the road.



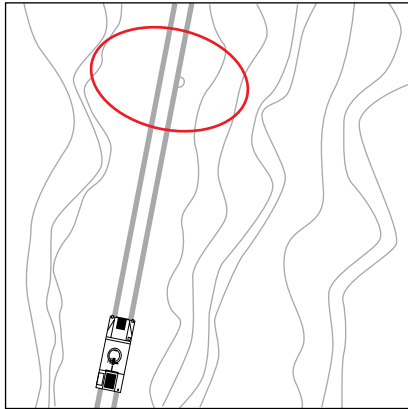
**Potholes**

Potholes, inside, by or under any packaging.

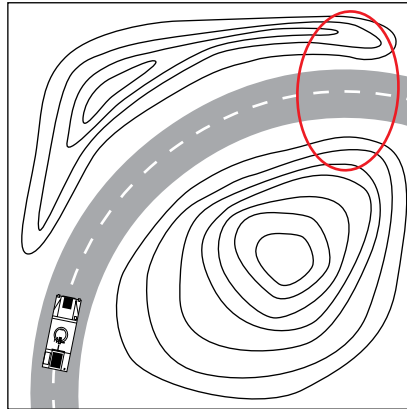


These points are ideal for IED's:

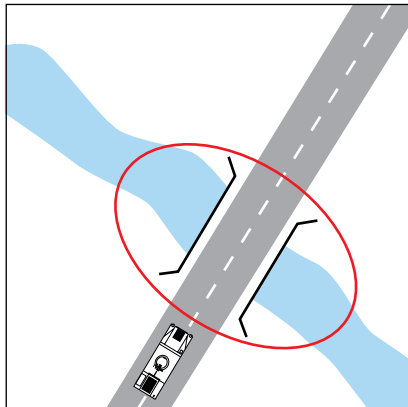
1. Soft sand



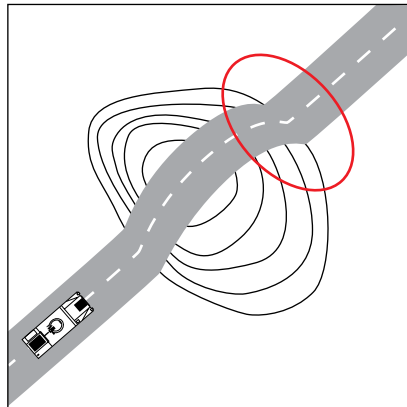
2. Sharp turn



3. Stream bed/culvert



4. Up/down slope



These points are ideal for IED's: **turns**



These points are ideal for IED's: **watercrossing/bridges/culverts**



These are points that:

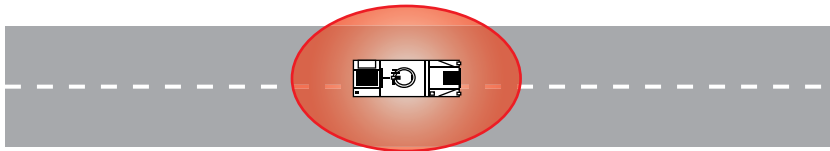
- slow you
- are not open
- canalize you

**5 and 20 meter check**

- Check for disturbed earth or other suspicious objects!
- Be systematic and take your time as IEDs are well camouflaged! All stops must involve individual soldiers conducting 5 meter checks and teams conducting 20 meter checks

**5 meter check**

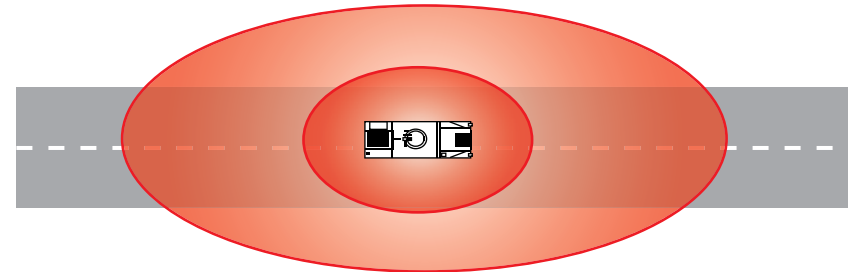
- Identify the best position to stop, vehicle commander orders 5 meter check
- From inside the vehicle visually check around the vehicle 5 meters
- LOOK DOWN BEFORE 1ST STEP! Get out of the vehicle,
- Do not forget to check under the vehicle!
- Conduct a visual check for 5m, work from the ground to up and above head high.
- Conduct a physical check for 5 meters around the vehicle, use flashlight at night

**Actions at short halts**

Immediately scan 5 meters around vehicle for IEDs.

**20 meter check** (after 5 meter check is completed)

- Vehicle commander orders 20 meter check
- Continue scanning out to 20 meters in your area checking for potential IED indicators and everything out of the ordinary.
- First check the 20 meter visually
- Second conduct a physical check of the 20 meter area.
- Be on the lookout for a potential trigger man observing your actions remain calm, do not panic on finding the IED, any hasty actions may alert the trigger man to detonate the IED.
- Do not pick up or touch an IED

**Actions at long halts**

Immediately scan, then dismount and search for 20 meters around vehicle.

**What to do when finding an IED?****Confirm** Communication from a safe distance

- Establish and confirm the presence of a device. If a device has functioned it is confirmed.
- This is to be done from a safe location with maximum use of distance, frontal and overhead protection – remain out of line of sight of the device! Your safety should not be compromised for positive identification of an IED. You should not move closer to the device unless absolutely necessary as observation can be achieved with the use of optics such as binoculars and weapon scopes.
- Do not touch any devices.
- Ensure you are constantly aware of the possibility of secondary devices.
- Do not get tunnel vision, inform the rest of your callsign of the presence of the suspected item.
- Call Higher Headquarters/ EOD using the IED/UXO 10 line report.

**Clear** Evacuate an area of approx 300 meter

- Evacuate the area as quickly as possible.
- Move people away from the device and not past it.
- Mark your location and note the direction and distance to the device. Move to a minimum distance of 200 meters from the suspect item.
- The On-Scene Commander will make the decision on how large an area to clear. The below danger areas are from ISAF SOP 10370:
  - 200 meters – small device/postal bomb
  - 300 meters – car bomb
  - 600 meters – large device e.g. truck bomb. If an open area, then increase to 1000m.
- Identify and establish an Incident Control Point which must always be searched.
- Make maximum use of hard cover, and ensure personnel are out

of the direct Line of Site (LOS) from the suspect area to cleared positions. If cover cannot be obtained, maximize distance from the device.

**Cordon** Establish cordon around site – 300 meter

- Cordon off the area and do not allow anyone to re-enter until the EOD/IEDD Team Commander has deemed the area safe.
- The purpose of the cordon is to:
  - Prevent unauthorized personnel from entering the site (for their own safety and the safety of the first responders)
  - Preserve the scene for further exploitation
  - Provide outward protection and security against command-initiated IEDs.
- When clearing personnel from the area, random individual checks should be carried out as potential exists in identifying a triggerman, cameraman, and/or insurgent personnel.
- Convoy personnel man the perimeter until additional assets arrive on scene. Do not become distracted.
- Witnesses, if available, should be held at the ICP so they can be questioned by follow-up agencies.

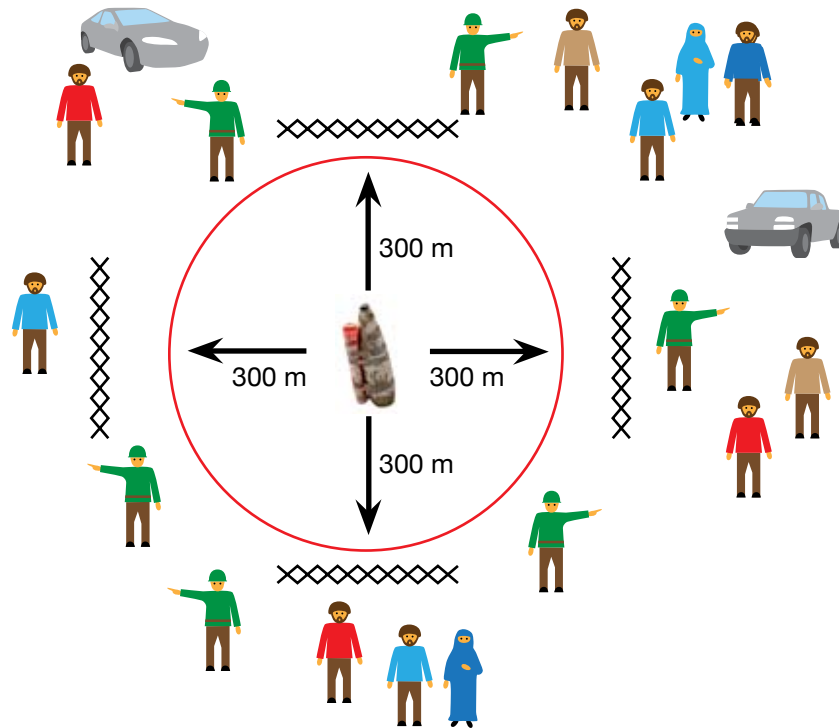
**Control** Only allow authorized personnel to enter

- The On-Scene Commander will have command of all activity outside the cordon.
- Allow only first responders to breach the cordon through the ICP.
- All civilian traffic should be diverted away from the cordon. Maintain (from a safe distance) a visual/line of sight (binoculars and scopes) observation of the subject IED to ensure no tampering occurs.
- Immediately report any personnel observed approaching the IED according to the unit SOP.
- The cordon must be secure, ensuring no one enters the danger area until the EOD Team has given the all clear signal.

- Remain alert and look for a potential triggerman from your position.

### Cordon – Confirm – Control

Keep anyone out of the area! Inform your superiors!



1. Treat it as an ambush!
2. It may be followed by more explosions or direct and indirect enemy fire.
3. Return fire if positive identification of the enemy is made IAW the stated rules of engagement.
4. Move out of the kill zone as directed by your commander.
5. Move to the best location in order to reconsolidate and further assess the situation.
6. Keep security ..... 360 degrees at all times!

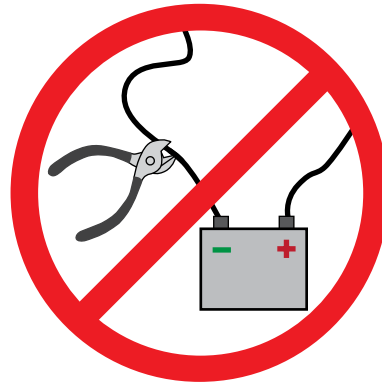


Clear, upon finding an IED don't stand too close to it, clear the area!

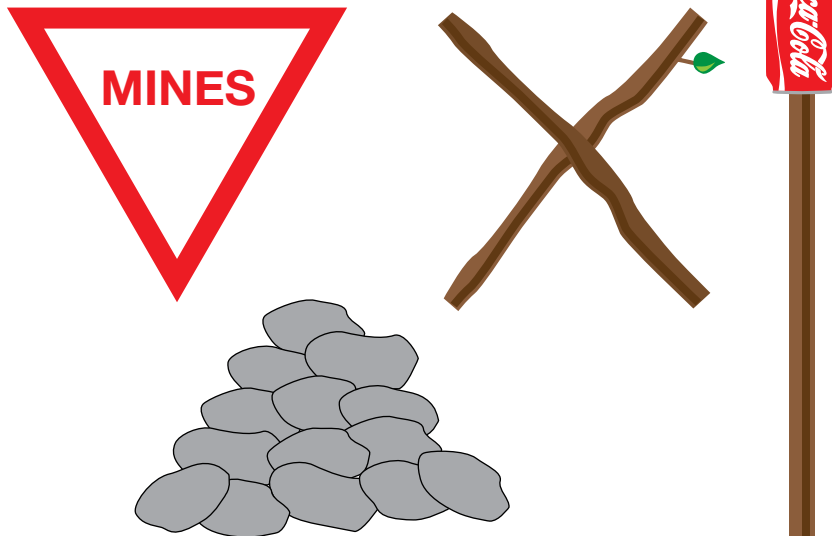
1. Don't pick up or touch an IED  
- it may kill you!



2. Don't cut the wires  
- it may kill you!



3. Mark the location and report the finding!



Ser	Details required	Actual details
1.	<b>M – Military details</b> (callsign, unit)	
2.	<b>E – Exact location of incident</b> (minimum 6 figure grid and description required)	
3.	<b>T – Time and type of incident</b> (fire, explosion, RTA, collapsed building)	
4.	<b>H – Hazards in the area</b> (chemical, power cables, fire, hostile activity)	
5.	<b>A – Approach routes for emergency vehicles and details of helicopter landing site</b>	
6.	<b>N – Number, nationality and type of casualties</b> (rough estimation of severity of injuries required)	
7.	<b>E – Expected response</b> (what assets are available and what assets are needed)	